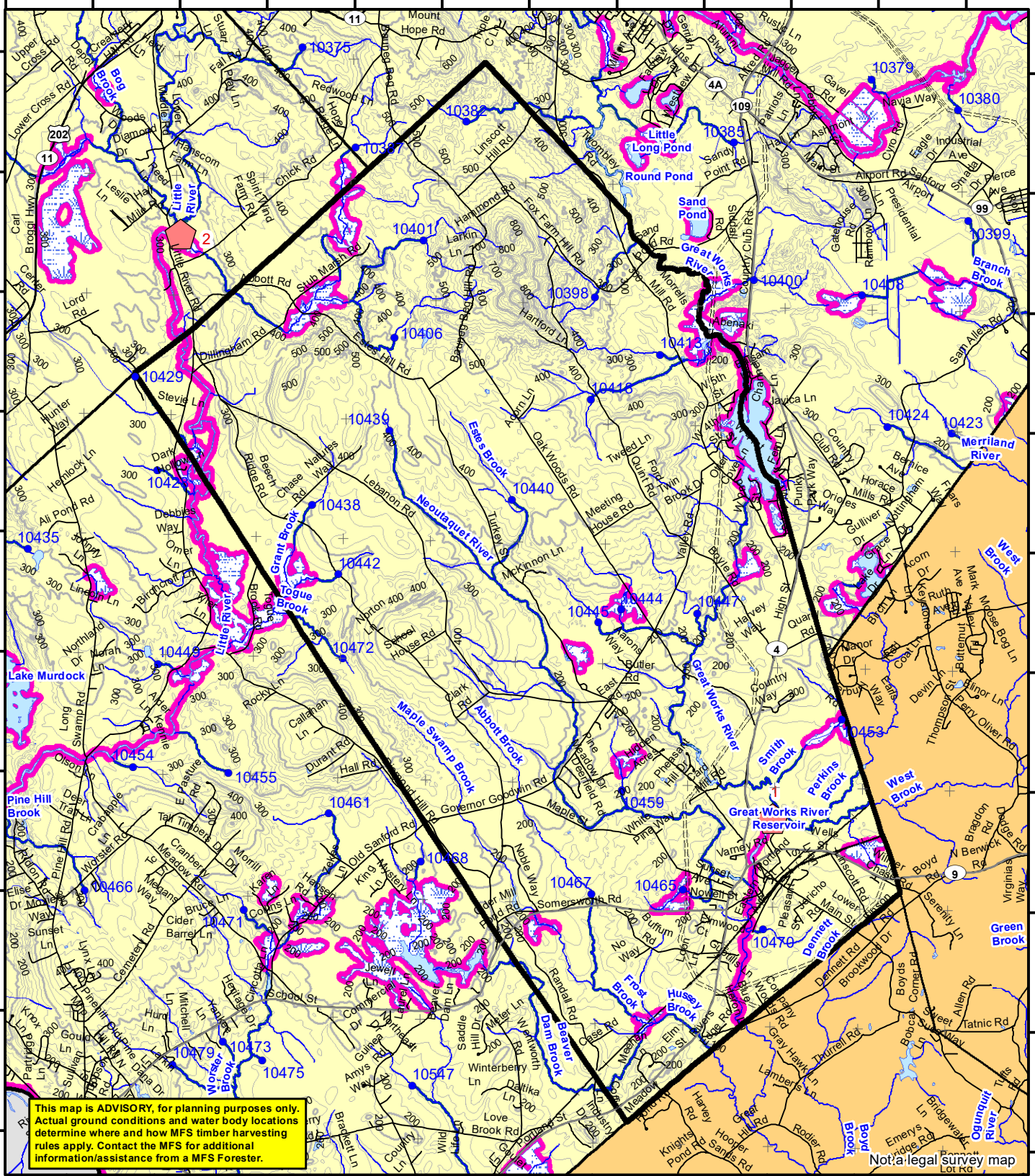


70°53'0"W 70°52'0"W 70°51'0"W 70°50'0"W 70°49'0"W 70°48'0"W 70°47'0"W 70°46'0"W 70°45'0"W 70°44'0"W 70°43'0"W 70°42'0"W

43°25'0"N
43°24'0"N
43°23'0"N
43°22'0"N
43°21'0"N
43°20'0"N
43°19'0"N
43°18'0"N
43°17'0"N
43°16'0"N



This map is ADVISORY, for planning purposes only. Actual ground conditions and water body locations determine where and how MFS timber harvesting rules apply. Contact the MFS for additional information/assistance from a MFS Forester.

Not a legal survey map

Statewide Standards

Buffers

- 250 Foot Buffer Zones
- Great Ponds
- Non-forested Wetlands greater than 10 acres
- Rivers below the 25 square mile drainage point
- Coastal Wetlands
- Tidal Waters
- Essential Wildlife Habitat (Least Tern, Roseate Tern, Piping Plover)
- 75 Foot Buffer Zones - Streams between the 300 acre drainage point and the 25 square mile drainage point
- Shoreline Integrity - Streams draining less than 300 acres, ponds and Non-forested Wetlands greater than 0.1 acres and less than 10 acres
- Shoreline Integrity also applies to UNMAPPED streams and wetlands.

Habitat

- Essential Wildlife Habitat (Least Tern, Roseate Tern, Piping Plover)

Forest Operation Notification & Shoreland Area* Map

North Berwick

Adoption Date
6/11/2009

March 2022

*See MFS Rule - Chapter 21 for additional information.

Department of Agriculture, Conservation and Forestry
Maine Forest Service
Forest Policy & Management

Roads

- Interstate
- US Highway
- State Highway
- 24k Roads

Hydrology

- Pond or Lake
- River
- Estuary

Streams

- 300 Acre Drainage Point (start of the 75 ft buffer)
- 1234 - ID Number (location info)
- 25 Square Mile Drainage Point (start of the 250 ft buffer)
- 56 ID Number (location info)

Wetlands

- Emergent or Marine Wetland
- Non-forested Wetlands Greater Than 10 acres (Lacustrine, Palustrine)

Contours

- 20 ft
- 100 ft

Utilities

- Electric
- Pipeline
- Railroad
- Airfield

Data Source:
Maine Office of GIS

LO Last Name _____
LO First Name _____
Prepared By _____
FONS # _____
Date _____

FON Town _____
Statewide Standards Rules do not apply (Town/MDEP Standards apply)
Statewide Standards Rules Apply
LUPC - Unorganized or Deorganized Town
Outside Maine

G.T.Miller E:\s\sws page size march 2022.mxd